

# Rhesus macaque CD4/LEU3 Protein

Cat. No. CD4-RM101

## Description

<b>Source</b>	Recombinant Rhesus macaque CD4/LEU3 Protein is expressed from HEK293 with His tag at the C-Terminus It contains Lys26-Trp390.
<b>Accession</b>	G7N5T8
<b>Molecular Weight</b>	The protein has a predicted MW of 41.5 kDa. Due to glycosylation, the protein migrates to 45-52 kDa based on Bis-Tris PAGE result.
<b>Endotoxin</b>	Less than 1 EU per µg by the LAL method.
<b>Purity</b>	>95% as determined by Bis-Tris PAGE; >95% as determined by HPLC

## Formulation and Storage

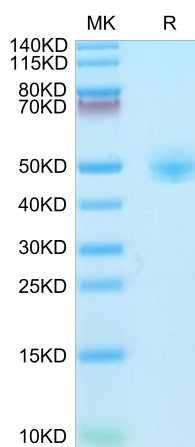
<b>Formulation</b>	Lyophilized from 0.22 µm filtered solution in PBS (pH 7.4). Normally 8% trehalose is added as protectant before lyophilization.
<b>Reconstitution</b>	Centrifuge the tube before opening. Reconstituting to a concentration more than 100 µg/ml is recommended. Dissolve the lyophilized protein in distilled water.
<b>Storage</b>	-20 to -80°C for 12 months as supplied from date of receipt. -80°C for 3 months after reconstitution. Recommend to aliquot the protein into smaller quantities for optimal storage. Please minimize freeze-thaw cycles.

## Background

CD4, also known as L3T4, T4, and W3/25, is an approximately 55 kDa type I transmembrane glycoprotein that is expressed predominantly on thymocytes and a subset of mature T lymphocytes. It is a standard phenotype marker for the identification of T cell populations. Integral membrane glycoprotein that plays an essential role in the immune response and serves multiple functions in responses against both external and internal offenses. In T-cells, functions primarily as a coreceptor for MHC class II molecule: peptide complex.

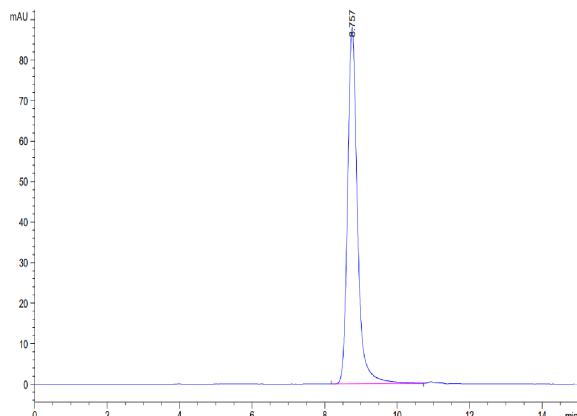
## Assay Data

### Bis-Tris PAGE



Rhesus macaque CD4 on Bis-Tris PAGE under reduced condition. The purity is greater than 95%.

### SEC-HPLC



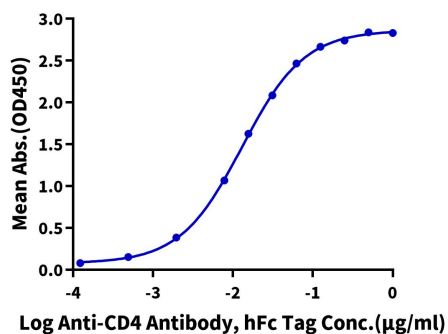
The purity of Rhesus macaque CD4 is greater than 95% as determined by SEC-HPLC.

Assay Data

ELISA Data

**Rhesus macaque CD4, His Tag ELISA**

0.1µg Rhesus macaque CD4, His Tag Per Well



Immobilized Rhesus macaque CD4, His Tag at 1 µg/ml (100 µl/Well) on the plate. Dose response curve for Anti-CD4 Antibody, hFc Tag with the EC50 of 13.0 ng/ml determined by ELISA (QC Test).